

MANROSE[®]

Kitchen & Laundry Ducting Kits



Ducting solutions for a healthier home

for the Kitchen

MANROSE
CLASSIC

Extraction of cooking fumes at their source is essential for moisture and odour reduction in the home. To help achieve this all kitchen rangehoods should be ducted outside.

Manrose Kitchen Rangehood Ducting Kits are designed to extract fumes efficiently and will fit most rangehoods. They can be easily installed by the home handyman or a qualified tradesperson

- There are three ducting options available, for the kitchen rangehood. Through an adjacent wall, through the soffit (under the eave) or up through the roof.
- Semi-Rigid ducting is used in our top of the range systems to reduce the rangehood system noise.
- Fully complies to AS/NZS 60335.2.80

THRU WALL RANGEHOOD DUCTING KITS

Metric Size	Description	Order Code
125mm	Rear Vent - Gravity Grille	DCT1162
150mm	Top & Rear Vent - Weatherproof Cowl	DCT2592

- For added weather protection use the weatherproof cowl as included in DCT2592

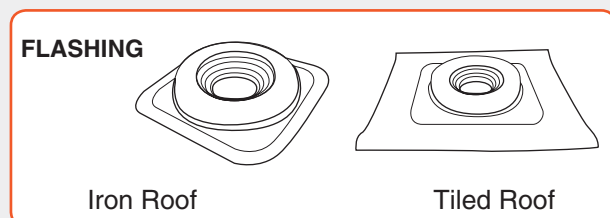
SOFFIT RANGEHOOD DUCTING KITS

Metric Size	Description	Order Code
150mm	Thru Soffit	DCT1161
150mm	Thru Soffit - Galv Tube	DCT1259
150mm	Thru Soffit - Semi Rigid	DCT2323

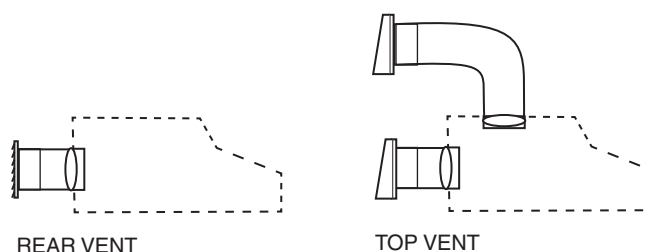
- All systems include 3 metres of Aluminium Duct
- Galv Tube system also includes 900mm of Solid Tube
- Semi-Rigid system also includes 3 metres of Semi-Rigid Duct

THRU ROOF RANGEHOOD DUCTING KITS

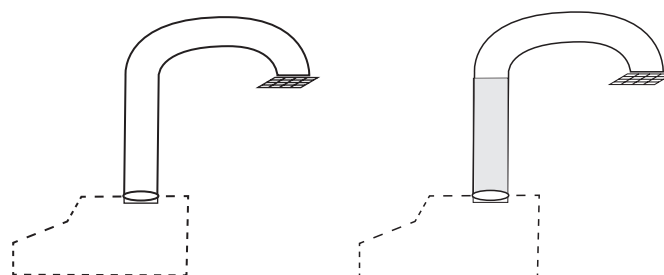
Metric Size	Description	Order Code
125mm	Thru Roof - Iron	DCT0943
150mm	Thru Roof - Iron	DCT2324
150mm	Thru Roof - Tiled	DCT2325



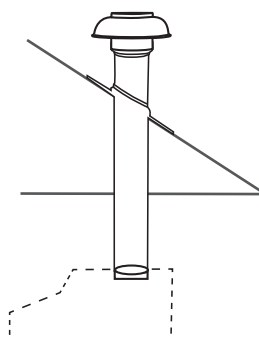
MANROSE CLASSIC THRU WALL RANGEHOOD KITS



MANROSE CLASSIC SOFFIT RANGEHOOD KITS



MANROSE CLASSIC THRU ROOF RANGEHOOD KITS



for the Laundry

Dryer Ducting Kits effectively remove the moist warm air generated from clothes dryers and expel it directly outside. This process eliminates the build up of dampness, helping to keep your home dry and free from condensation.

- Designed for today's modern & classic dryers.
- Ducting Kit suits dryers with a 100mm outlet.
- The square to round elbow will fit snugly onto most 100mm dryer outlets.
- Easily installed in confined spaces.
- Fully complies to AS/NZS 60335.2.80
- 2 Year Warranty.

INVERTED & WALL MOUNTED DRYER DUCTING KIT

Metric Size	Model No.	Description	Order Code
100mm	DKSD100	Soffit Ducted	DCT1263

Please Note: For soffit ducted free standing dryers extra rectangular ducting and a connector will be required (Order codes DCT0013 & DCT0014).

CLASSIC THRU WALL FAN KIT

Metric Size	Model No.	Performance	Order Code
100mm	XP100S	23l/s, 85m ³ /hr	FAN0053
125mm	XP125S	36l/s, 130m ³ /hr	FAN0080
150mm	XP150S	87l/s, 313m ³ /hr	FAN0135

MANROSE[®]

PRO-SERIES

PRO SERIES THRU WALL FAN KIT

Metric Size	Model No.	Performance	Order Code
125mm	XPLP125SS	36l/s, 130m ³ /hr	FAN0614
150mm	XPLP150SS	87l/s, 313m ³ /hr	FAN0621

THRU WALL VENTILATION

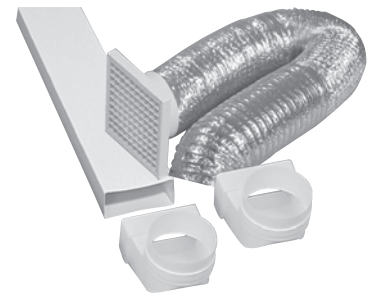
- Thru wall ventilation kits are ideally suited to ventilate laundry areas where utilities are adjacent to exterior walls.
- Thru wall kit includes fan, ducting and grille.
- Fully Building Code compliant
- 5 Year Warranty

MANROSE[®]

CLASSIC



DRYER DUCTING KIT



SOFFIT DUCTED

MANROSE THRU WALL VENTILATION FANS



CLASSIC



PRO SERIES

NEW ZEALAND BUILDING CODE

The New Zealand Building Code regulations require that any fan installed in a bathroom, toilet, laundry, or kitchen must have the exhaust air ducted to the outside of the home. This eliminates the build up of an unhealthy concentration of moisture in roof cavities.



DUCTING KIT CONTENT

	Thru Wall Rear Vent	Thru Wall Rear/Top	Soffit Kit	Soffit Kit Galv Tube	Soffit Kit Semi-Rigid	Thru Roof 125 Iron	Thru Roof 150 Iron	Thru Roof Tiled	Dryer Soffit Kit
Semi Rigid Duct - 400mm length	✓								
Semi Rigid Duct - 1.5m length		✓							
Semi Rigid Duct - 3m length					✓		✓	✓	
Solid Tube - Galvanised 900m length				✓			✓	✓	
Flexible Aluminium - 3m length		✓	✓	✓	✓	✓			✓
Flat Channel Ducting - 0.75m length									✓
White Eggcrate Grille					✓				✓
White Gravity Grille	✓	✓							
White Fixed Louvre Grille			✓	✓					
White Weatherproof Cowl		✓							
2 x Rec to Round 90 Elbows									✓
150:125 Reducer		✓			✓	✓	✓	✓	
150mm Connector		✓			✓		✓	✓	
Thru Roof Cowl						✓	✓	✓	
Flashing - Deklite						✓	✓		
Flashing - Lead								✓	
Duct Tape	✓	✓	✓	✓	✓	✓	✓	✓	✓

COMPONENTS LIST

MANROSE CONNECTORS & ADAPTORS



ADAPTOR - ROUND

125mm diameter round to round adaptor .. DCT0448
Designed to duct most round outlet rangehoods



ADAPTOR - ROUND TO RECTANGULAR

335mm x 155mm to 125mm diameter DCT1360
Designed to duct most rectangular outlet rangehoods



DUCT CONNECTORS - ROUND

100mm Plastic connector DCT0159
125mm Metal connector DCT0037
150mm Metal connector DCT0059



REDUCING CONNECTORS - ROUND

150:125 Reducing connector DCT2066
150:100 Reducing connector DCT2122



LOW PROFILE CONNECTOR

Connect two Low Profile Duct together DCT0014



ELBOW CONNECTOR

Rectangular to round 90° bend elbow DCT0124

MANROSE WALL/CEILING GRILLES



FIXED LOUVRE GRILLES

100mm white fixed louvre DCT0025
125mm white fixed louvre DCT0041
150mm white fixed louvre DCT0063



GRAVITY SHUTTER GRILLES

100mm white gravity shutter DCT0029
125mm white gravity shutter DCT0044
150mm white gravity shutter DCT0066



WEATHERPROOF COWL

100mm white weatherproof cowl DCT0018
125mm white weatherproof cowl DCT1030
150mm white weatherproof cowl DCT1031

MANROSE DUCTING

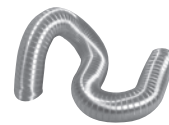


ALUDUCT - Aluminised Flexible Ducting

Temp. range -30°C to 140°C, silver finish.

100mm diameter x 1m DCT0357
125mm diameter x 1m DCT0358
150mm diameter x 1m DCT0359

Complies with NZ Building Code fire rating requirements.



SEMI DUCT - Semi Rigid Ducting

Temperature range: -30°C to 250°C, silver finish.

100mm diameter x 1.5m DCT0333
125mm diameter x 1.5m DCT0334
150mm diameter x 1.5m DCT0335

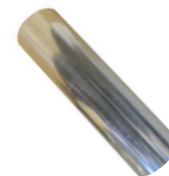
Complies with NZ Building Code fire rating requirements.



LOW PROFILE FLAT CHANNEL

Able to be concealed when installed along the top of wall units. It can be fitted in ceiling voids and cavity walls, providing versatility whilst remaining unobtrusive.

110mm x 54 x 1.5m length DCT0013
204mm x 60 x 1.5m length DCT0519
220mm x 90 x 1.5m length DCT1443
300mm x 25 x 1.5m length DCT1460



GALVANISED SOLID TUBE

100 diameter x 900mm DCT0151
125 diameter x 900mm DCT0152
150 diameter x 900mm DCT0153

Please contact us or visit our website www.securimax.co.nz for more information on our extensive range of Manrose Ducting and Accessories.

Dealer Details:

For the full range of **MANROSE** Fans,
Ducting, Grilles and Accessories visit our website.

www.securimax.co.nz www.manrose.com.au

Securimax reserves the right to alter specifications without notice.